



GMT MONTHLY MEMBERSHIP PROGRESS REPORT

Results as of: 5/31/2018

Multiple District 39

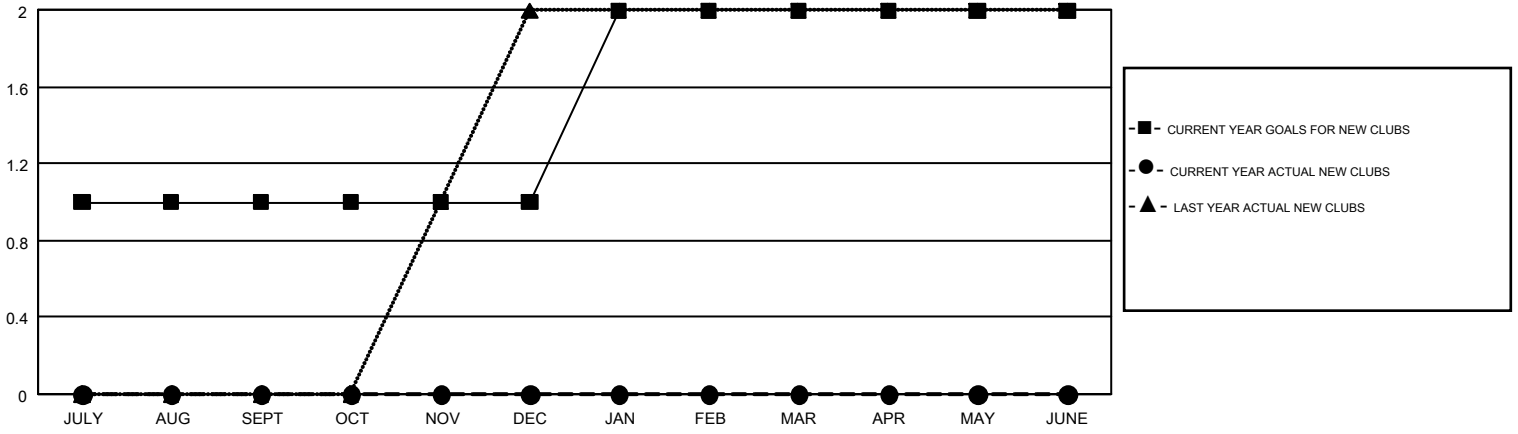
LOCATION: IDAHO

GMT: HOWARD HUDSON

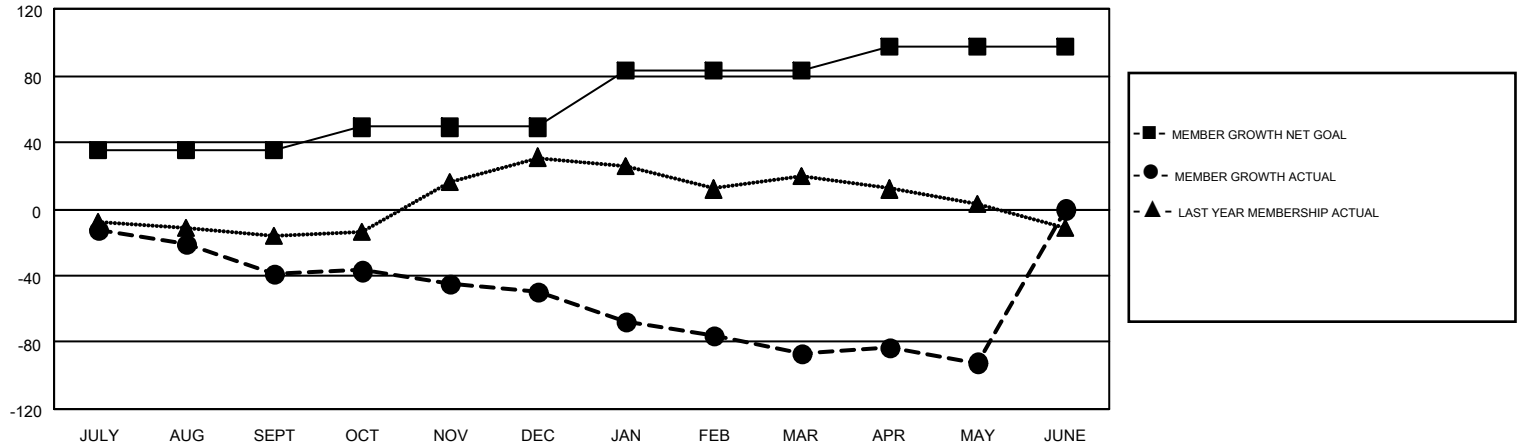
GMT CA 1

Clubs				Members			
RESULTS FOR 2017-2018				RESULTS FOR 2017-2018			
QUARTER	NEW CLUB GOAL	NEW CLUBS	DROPPED CLUBS	QUARTER	MEMBER GROWTH NET GOAL	MEMBER GROWTH ACTUAL	DROPPED MEMBERS ACTUAL (including transfers)
JULY/AUG/SEPT	1	0	1	JULY/AUG/SEPT	35	23	56
OCT/NOV/DEC	0	0	1	OCT/NOV/DEC	14	26	35
JAN/FEB/MAR	1	0	0	JAN/FEB/MAR	34	21	56
APR/MAY/JUNE	0	0	0	APR/MAY/JUNE	14	26	29

GOALS AND ACTUAL NEW CLUBS CUMULATIVE



GOALS AND ACTUAL MEMBERS CUMULATIVE



DROPPED CLUBS: 2	29 CLUBS OF 65 ADDED 1 OR MORE NEW MEMBERS	<u>GENDER DISTRIBUTION</u>	
<u>DROPPED MEMBERS</u>		MALE	923 (62.24%)
DECEASED	9	FEMALE	560 (37.76%)
CLUB CANCELLED	15	TOTAL FAMILY UNIT MEMBERS 387	
OTHER	152	FAMILY MEMBERS PAYING HALF DUES 201	
TOTAL	176		

[CLICK HERE FOR CUMULATIVE MEMBERSHIP DATA](#)